

TITLE IX

FOX LANE

Softball & Baseball

Softball



Safety net



Bat storage



Batting Cage

EQUIPMENT



Turf mats for hitting



Whiteboards



Pitcher Warm Up



Bat storage



Batting Cage

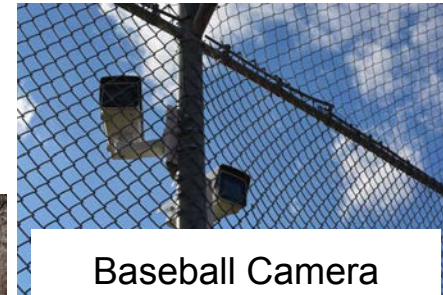


Portable backstop

Baseball



Portable mound/safety net



Baseball Camera



Safety Pitching L Screens

Softball



bench



DUGOUT

Entry



Cinderblock



Helmet storage

Baseball



Softball

FIELDS

Baseball



In field



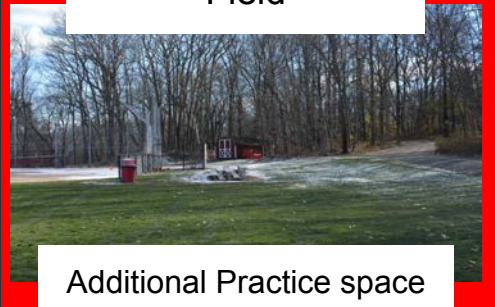
Left Field



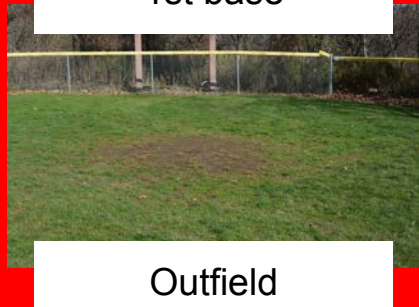
Field



1st base



Additional Practice space



Outfield



Field



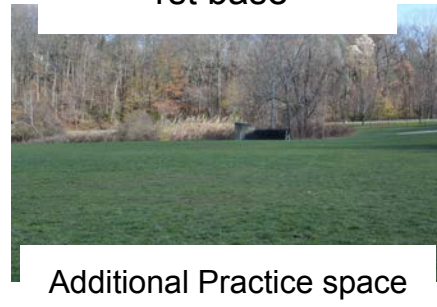
Covers



1st base



Rakes



Additional Practice space

Softball

PRESS BOX

Baseball



Softball

Water Fountains
Home and Away

Baseball



BOND PROJECT

Softball-MS Campus

- Scoreboard
- Fencing
- bullpen/batting tunnel X1
- Sheltered dugout
- Backstop
- Clay infield
- Spectator bleachers

NO Future plans listed



Schematic Plan- Softball Field Complex at Fox Lane Middle School
Bedford Central School District
SCALE: N.T.S.



Baseball-HS campus

- Turf surface to play in all weather
- Electrical for LED sports lighting to play at all times
- Fencing
- Practice infield
- Bullpen
- Access to restrooms
- Tiered spectator seating
- Sheltered dugout
- Batting tunnel X5
- home/visitor bullpen
- Scoreboard

?FUTURE...

- LED lighting system
- Baseball practice infield
- Baseball training facility
- Tiered Spectator Seating



Schematic Plan- Multi-purpose Athletic Field Complex at Fox Lane High School
Bedford Central School District
SCALE: N.T.S.

February 8, 2022

Fox Lane Campus Athletics

	Description	Project Cost	
CAMPUS ATHLETICS			
1	Multi-Purpose Synthetic Turf Field & Baseball including bullpens, sheltered dugouts, field fencing, high netting, batting tunnel, accessible pathways, spectator seating, etc.	\$3,718,724	
2	Field #4 Synthetic Turf Improvements including sideline fencing, end line fencing with high netting, pedestrian access, vehicular access, (250) spectator bleachers with retaining wall, additional turf space for storage of goals, etc.	\$2,052,924	
3	MS Softball Natural Turf Improvements including perimeter fencing, accessible pathways, outfield fence, baseline fencing, spectator bleachers, softball field with clay infield, backstop, sheltered dugouts with benches, bullpen, additional physical education area, etc.	\$879,824	
4	HS Tennis Court Improvements	\$73,319	
5	New Restrooms Facility near HS Track	\$440,000	
6	New Restrooms Facility near Field #4	\$320,000	
7	New Restrooms Facility near MS Softball	\$290,000	
8	TOTAL Fox Lane Campus Athletics Bond Scope - PROPOSITION #1		\$7,774,791